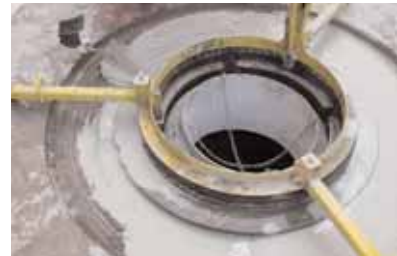


PAGEL®

SPEZIAL-BETON



PRODUCT INFORMATION



PLEASE FIND THE LATEST LEAFLET ISSUES ON THE INTERNET AT
WWW.PAGEL.COM



Modern production guarantees high quality



For more than 40 years PAGEL® SPEZIAL BETON GmbH & Co. KG in Essen, Germany has influenced and played a major role in the development of grouts and special mortars.

The PAGEL® GROUTING-SYSTEM has become a worldwide recognised system for grouting and our products like V1®, V12 and V13 are synonymous with the word “non-shrinking grout”.

A wide range of products together with an undeviating quality backed by a comprehensive customer service has earned PAGEL® its outstanding reputation for being able to provide a product and solution for factory and industrial machine foundations. Many years of this reputation and excellent quality has resulted in our being certified with the EN ISO 9001.

The factory quality control is in compliance with international standards and directives like DIN EN 1504-3, DIN EN 1504-6 and DIN EN 1504-7.

With this, we research and develop newer and more innovative products in our state-of-the-art laboratory and continue to deliver to you high quality PAGEL® materials. Our range of grouts, speciality concretes, industrial floors, and resins increases the life of industrial assets, protects and maximises productivity and output of expensive equipment and machinery. Needless to say while your demands for quality materials are being served, our customer services will also fulfill your specific needs and requirements during construction by suggesting products, specifications and other technical services.

After all, our customers believe, PAGEL® is a solid foundation to build on.

*...we produce great grout
- worldwide!*

TABLE OF CONTENTS

GROUTS

GROUT		Map / Data sheet*)	Side
V1/50°	grout, 0–5 mm	2 / 0201	4
V1*/160	flowable concrete, 0–16 mm	2 / 0203	4
V1*/10	grout, 0–1 mm	2 / 0202	4
CONCRETE GROUT			
V80C45	concrete grout, 0–8 mm	2 / 0209	4
V160C45	concrete grout, 0–16 mm	2 / 0209	4
PRE-MIXED GROUT			
V14	pre-mixed grout	2 / 0204	5
BASALT GROUT			
V15	basalt grout	2 / 0205	5
STEEL FIBRE REINFORCED GROUT			
V1A	steel fibre reinforced grout	4 / 0401	6
STEEL FIBRE REINFORCED BASALT GROUT			
V1A15	steel fibre reinforced basalt grout	4 / 0401	6
SUPER HIGH STRENGTH GROUT			
V1/30HF	super high strength grout	2 / 0214	7
V1/60HF	super high strength grout	2 / 0214	7
QUICK-SETTING GROUT			
V2	quick-setting grout	3 / 0301	7
PRAPID SET GROUT			
VB	rapid set grout	3 / 0302	8
PRAPID SET GROUT - PLASTISIZE MOTAR			
VB-P	rapid set grout – plastic consistency	3 / 0302	8
TURBO GROUT			
VT	turbo grout	3 / 0308	8
TURBO GROUT - PLASTISIZE MOTAR			
VT-P	turbo grout – plastic consistency	3 / 0308	8
ANCHOR GROUT			
E1	anchor grout, flowable	5 / 0502	9
E1SF	anchor grout, thixo consistency	5 / 0503	9
E1F	injection grout, high flowable	5 / 0503	9
JOINT FILLER GROUT			
FM10	joint filler grout, 0–1 mm	13 / 1305	9
GROUT			
VS°	grout, 0–5 mm	13 / 1303	10
JOINT FILLER GROUT			
VS°-P	joint filler grout, 0–2 mm	13 / 1304	10

CONCRETE REPAIRING

PCC-MORTAR		Map / Data sheet*)	Side
MSO2	corrosion protection/adhesion layer	10 / 1001	11
MS20°	PCC-mortar	6 / 0602	11
PCC-I-MORTAR			
MHO2	corrosion protection/adhesion layer	10 / 1004	11
MH20	PCC-I-mortar, 0–2 mm	6 / 0603	11
MH80	PCC-I-mortar, 0–8 mm	6 / 0603	11
PCC-SCREEDING COMPOUND			
MSO5	PCC-screeding compound	11 / 1101	12
SPCC-SPRAY-MORTAR			
SP20	SPCC-spray-mortar, 0–2 mm	7 / 0701	12
SP40	SPCC-spray-mortar, 0–4 mm	7 / 0702	12
CONSTRUCTION-MORTAR			
M3°	construction-mortar	6 / 0604	12
UNIVERSAL-MORTAR			
U	universal-mortar	8 / 0803	13
QUICK-REPAIR-MORTAR			
R20	quick-repair-mortar	8 / 0802	13
READY-FOR-USE-MORTAR DRINKING WATER AREA			
TW	ready-for-use-mortar	9 / 0901	14
CHANNEL-MORTAR			
KA	channel-mortar	9 / 0801	15
REPAIR GROUT			
KA-S	repair grout	9 / 0810	15

*) map-registry-no. / technical data-sheet no.

CONCRETE PROTECTION

CONCRETE PROTECTION SYSTEM		Map / Data sheet*)	Side
O2C	protection paint, (OS-C/OS-B)	12 / 1201	16
O2DE	protection coating, (OS-DII)	12 / 1202	16
O2A	hydrophobation, (OS-A/OS-B)	12 / 1205	17
CEMENT-SLURRY			
D1	pagelastix, (OS-DI)	12 / 1203	17

INDUSTRIAL FLOOR

STEEL-FIBRE SCREED		Map / Data sheet*)	Side
P3A	steel-fibre flooring	14 / 1404	18
INDUSTRIAL FLOOR			
P40	industrial floor	14 / 1411	18
LEVELLING SCREED			
FE20	levelling screed	14 / 1409	19
INDUSTRIAL FLOORS - ADHESION LAYER			
PH10	industrial floors - adhesion layer	14 / 1408	19

RESINS

PRIMER		Map / Data sheet*)	Side
EH1	epoxy resin / dry floor	15 / 1501	20
EH114	epoxy resin / low for temperatures	15 / 1502	20
EH115	epoxy resin / moist for subsoil	15 / 1503	20
COATING			
EH120	thin coating	15 / 1505	20
EH130	final coating	15 / 1511	20
EH136	surface protection	15 / 1513	20
EPOXY-GROUT			
EH196R	epoxy-grout	15 / 1524	21
MORTAR			
EH192	epoxy-resin mortar	15 / 1509	21
EH2	epoxy-resin boxing up mortar	15 / 1523	21
INJECTION			
EH145	injection-resin	15 / 1514	21

CONSTRUCTION PRODUCTS

CURING MEMBRANE		Map / Data sheet*)	Side
O1	curing membrane	16 / 1604	22
QUICK-REPAIR MORTAR			
B1	quick-repair mortar	16 / 1602	22
CONSTRUCTION AND TILE ADHESIVE			
R34	construction and tile adhesive	16 / 1601	22

APPENDIX

PAGEL®-products with CE-marking	23
PAGEL®-concrete-repairing-system table	24
Your first step to PAGEL® - www.pagel.com	25
International addresses	26

V1/50*

PAGEL-GROUT*

V1*/160

V1*/10

free flowing over 90 minutes
non-shrink
high early- and final strengths
frost- and salt resistant
oil-resistant
chloride-free
pumpable
ready to use
externally tested

Machinery
Anchoring
Turbines
Bridge bearings
Potable water equipment
Concrete structures
High storage areas
Pre-cast concrete parts
Rails
Industrial plants



	Grain size mm	Grouting height mm	Compressive strength N/mm ²			Bending strength N/mm ²			Expansion Vol. %	Consumption kg/m ³
			1 d	7 d	28 d	1 d	7 d	28 d		
V1*/50	0 – 5	20 – 120	≥ 40	≥ 70	≥ 80	≥ 4	≥ 6	≥ 8	+ 0,5	2000
V1*/160	0 – 16	100 – 400	≥ 40	≥ 70	≥ 80	≥ 4	≥ 6	≥ 8	+ 0,5	2100
V1*/10	0 – 1	5 – 30	≥ 40	≥ 60	≥ 80	≥ 4	≥ 6	≥ 8	+ 0,5	2000

Classified in accordance with DafStb-Rili,

	Flowability class	Expansion class	Shrinkage	Early strength class	Compressive strength class
V1*/50	Categorisation	–	a ₃	SKVB II	A
V1*/160	Categorisation	–	a ₂	SKVB I	A
V1*/10	Categorisation	f ₂	–	SKVM II	A

CONCRETE GROUT

V80 C45

PAGEL-CONCRETE GROUT*

V160 C45

high flowability
low development of warmth
low elasticity module
pumpable
impervious to water and extensively resistant
to oil
ready to use
controlled increasing of volume

columns and machines
repairing-grout for prefabricated steel-concrete units and steel-concrete tubes
supporting of buildings
grouting of pockets
noise prevention walls
grouting of large volumes with at the same time control of the hydration temperatures



	Grain size mm	Grouting height mm	Compressive strength N/mm ²			Bending strength N/mm ²			Expansion Vol. %	Consumption kg/m ³
			1 d	7 d	28 d	1 d	7 d	28 d		
V80 C45	0 – 8	60 – 200	≥ 15	≥ 40	≥ 60	≥ 1,5	≥ 3,5	≥ 5,0	+ 0,4	2000
V160 C45	0 – 16	80 – 400	≥ 15	≥ 45	≥ 60	≥ 1,5	≥ 3,5	≥ 5,0	+ 0,4	2100

Classified in accordance with DafStb-Rili,

	Flowability class	Expansion class	Shrinkage	Early strength class	Compressive strength class
V80 C45	Categorisation	–	a ₂	SKVB I	C
V160 C45	Categorisation	–	a ₁	SKVB I	C

PAGEL-PRE-MIXED GROUT*

plastic consistency
non-shrinking
high early- and final strengths

Struts
Rail bearings
Bearings/Bridge bearings
Concrete repairs



V14/10

V14/40

V14/80

CE	Grain size mm	Grouting height mm	Compressive strength N/mm ²			Bending strength N/mm ²			Expansion Vol. %	Consumption kg/m ³
			1 d	7 d	28 d	1 d	7 d	28 d		
V14/10	0 – 1	10 – 30	≥ 45	≥ 70	≥ 75	≥ 5	≥ 8	≥ 9	+ 0,5	2000
V14/40	0 – 4	10 – 70	≥ 45	≥ 70	≥ 75	≥ 5	≥ 8	≥ 9	+ 0,5	2000
V14/80	0 – 8	50 – 100	≥ 45	≥ 70	≥ 75	–	–	–	+ 0,5	2100

BASALT-GROUT

PAGEL-BASALT-GROUT*

heat resistant up to 400 °C (short duration)
non-shrinking
high early- and final strengths
high abrasion resistance
building material class A 1 (not inflammable)

High-temperature area
Machinery
Anchorings
Steel struts



V15/30

V15/50

V15/80

	Grain size mm	Grouting height mm	Compressive strength N/mm ²			Bending strength N/mm ²			Expansion Vol. %	Consumption kg/m ³
			1 d	7 d	28 d	1 d	7 d	28 d		
V15/30	0 – 3	30 – 50	≥ 40	≥ 60	≥ 75	≥ 5	≥ 7	≥ 8	+ 0,1	2000
V15/50	0 – 5	40 – 100	≥ 40	≥ 60	≥ 75	≥ 5	≥ 7	≥ 8	+ 0,1	2200
V15/80	0 – 8	50 – 120	≥ 40	≥ 60	≥ 75	≥ 5	≥ 7	≥ 8	+ 0,1	2200

CE*Additives used in these products have an “EG-Conformity Explanation” according to § 9 “Building Product Law Authorization”. Thus the additives correspond to the regulations of the EN 934-2:2001-07.

V1A/40

PAGEL-STEEL FIBRE REINFORCED GROUT*

V1A/80

for heavy traffic
steel fibre reinforced
non-shrinking
extremely high strengths
good elasticity

Heavy Duty Areas
Crane rails
Construction parts
Presses
Foundations



	Grain size mm	Grouting height mm	Compressive strength N/mm ²			Bending strength N/mm ²			Expansion Vol. %	Consumption kg/m ³
			1 d	7 d	28 d	1 d	7 d	28 d		
V1A/40	0 – 4	40 – 70	≥ 40	≥ 70	≥ 80	≥ 6	≥ 7	≥ 10	+ 0,5	2000
V1A/80	0 – 8	60 – 200	≥ 40	≥ 70	≥ 80	–	–	–	+ 0,5	2100

STEEL FIBRE REINFORCED BASALT GROUT

V1A15/30

PAGEL-STEEL FIBRE REINFORCED BASALT GROUT*

V1A15/50

for heavy traffic
steel fibre reinforced
non-shrinking
extremely high strengths
good elasticity
heat resistant up to 500 °C
(short duration)

High-temperature areas
Heavy Duty Areas
Crane rails
Construction parts
Presses
Foundations



	Grain size mm	Grouting height mm	Compressive strength N/mm ²			Bending strength N/mm ²			Expansion Vol. %	Consumption kg/m ³
			1 d	7 d	28 d	1 d	7 d	28 d		
V1A15/30	0 – 3	40 – 80	≥ 45	≥ 70	≥ 80	≥ 6	≥ 8	≥ 10	+ 0,5	2000
V1A15/50	0 – 5	60 – 120	≥ 45	≥ 70	≥ 80	≥ 6	≥ 8	≥ 10	+ 0,5	2200

PAGEL-SUPER HIGH STRENGTH GROUT

high early and final strengths
highly fatigue resistance
controlled and even expansion
pumpable and easy to pour
resistant to cracks even when having a low w/c-value
oscillation-stabilizing

turbines, generators, compressors
wind-powered devices joints
grouting of joints and bearings
rail support systems, Ribbed slabs
and automatic warehouse supports



V 1/30HF

V 1/60HF

	Grain size mm	Grouting height mm	Compressive strength N/mm ²			Bending strength N/mm ²			Expansion Vol. %	Consumption kg/m ³
			1 d	7 d	28 d	1 d	7 d	28 d		
V1/30HF	0 – 3	30 – 300	≥ 70	≥ 90	≥ 130	–	–	–	+ 0,1	2300
V1/60HF	0 – 6	40 – 400	≥ 70	≥ 90	≥ 115	–	–	–	+ 0,1	2300

Classified in accordance with DafStb-Rili,

	Flowability class	Expansion class	Shrinkage	Early strength class	Compressive strength class
V1/30HF	Categorisation f ₂	–	SKVB I	A	C90/105
V1/60HF	Categorisation –	a ₃	SKVB I	A	C90/105

QUICK - SETTING GROUT

PAGEL-QUICK-SETTING GROUT

load bearing after 2 hours (also at 5 °C)
free flowing
non-shrinking
ready to use
resistant to frost and dew salt
pumpable

Turbines
Anchoring, Fixatores
Machinery
Steel constructions
Bridge bearings
Rails
Struts



V 2/10

V 2/40

V 2/80

V 2/160

	Grain size mm	Grouting height mm	Compressive strength N/mm ²				Bending strength N/mm ²				Expansion Vol. %	Consumption kg/m ³
			2 h	4 h	1 d	28 d	2 h	4 h	1 d	28 d		
V2/10	0 – 1	15 – 25	≥ 5	≥ 10	≥ 30	≥ 70	–	–	–	–	+ 0,4	2000
V2/40	0 – 4	20 – 100	≥ 5	≥ 10	≥ 25	≥ 70	–	–	–	–	+ 0,4	2000
V2/80	0 – 8	50 – 200	≥ 5	≥ 10	≥ 25	≥ 70	–	–	–	–	+ 0,4	2100
V2/160	0 – 16	100 – 400	≥ 5	≥ 10	≥ 40	≥ 70	–	–	–	–	+ 0,4	2100

Classified in accordance with DafStb-Rili,

	Flowability class	Expansion class	Shrinkage	Early strength class	Compressive strength class
V2/10	Categorisation f ₂	–	SKVM II	B	C55/67
V2/40	Categorisation f ₂	–	SKVM I	B	C55/67
V2/80	Categorisation –	a ₂	SKVB II	B	C60/75
V2/160	Categorisation –	a ₂	SKVB I	A	C60/75

VB10

PAGEL-RAPID SET GROUT

VB40

load bearing after 30 minutes (20 °C)
extremely high early strength
flowable and usable for boxing up
non-shrink
water resistant
resistant to frost and dew salt

Manhole cover grouting
Drain covers
Pipe channels
Installation works
Columns and prefabricated members



CE	Grain size mm	Grouting height mm	Compressive strength N/mm ²				Application time min (20°C)	Expansion Vol. %	Consumption kg/m ³
			0,5 h	1 h	1 d	28 d			
VB10	0 – 1	10 – 50	≥ 5	≥ 8	≥ 35	≥ 60	app. 10	+ 0,4	1900
VB40	0 – 4	30 – 60	≥ 5	≥ 8	≥ 35	≥ 60	app. 10	+ 0,4	1900

VB-P10

PAGEL-RAPID SET GROUT - PLASTIC CONSISTENCY

extremely fast setting mortar
plastic consistency
is ready for load-bearing within as little as 30 minutes (20 °C)
water impermeable
frost and road-salt resistant

installation of manhole rings
shaft repairing
repair work inside channels



VB-P10	0 – 1	10 – 50	≥ 5	≥ 8	≥ 35	≥ 55	app. 8	+ 0,4	1800
---------------	-------	---------	-----	-----	------	------	--------	-------	------

TURBO GROUT

VT05

PAGEL-TURBO GROUT

VT10

extremely fast setting grout
is ready for load-bearing within as little as 30 minutes
high flowability
non-shrink
water-impermeable
frost and road-salt resistant

sewer and shaft rehabilitation
for sealing domestic installations
grouting access hatches, slide valves and flaps
grouting of signalling systems used in traffic infrastructure
grouting of feedthroughs for industrial and domestic gas and water installations



	Grain size mm	Grouting height mm	Compressive strength N/mm ²				Bending strength N/mm ²				Application time min (20°C)	Consumption kg/m ³
			0,5 h	1 h	1 d	28 d	0,5 h	1 h	1 d	28 d		
VT05	0 – 0,5	10 – 30	≥ 5	≥ 8	≥ 25	≥ 50	≥ 2	≥ 2	≥ 4	≥ 8	app. 3	1900
VT10	0 – 1	10 – 50	≥ 5	≥ 8	≥ 45	≥ 70	≥ 2	≥ 2	≥ 5	≥ 8	app. 3	1900

VT-PO5

PAGEL-TURBO GROUT - PLASTIC CONSISTENCY

extremely fast setting mortar
plastic consistency
is ready for load-bearing within as little as 10 minutes (20 °C)
water impermeable
frost and road-salt resistant

installation of manhole rings
shaft repairing



VT-PO5	0 – 0,5	5 – 30	≥ 5	≥ 6	≥ 35	≥ 55	≥ 2	≥ 2	≥ 4	≥ 8	app. 3	1900
---------------	---------	--------	-----	-----	------	------	-----	-----	-----	-----	--------	------

PAGEL-ANCHOR GROUT

E1

pumpable and injectable
free flowing
non-shrinking
high adhesive strength
mining approvals

Mining and tunnel construction
Stabilization of subsoil
Filling of joints and cavities



E1SF

E1: workable at 30 °C 60 min.
E1SF: plastic consistency
E2: after 2 h: 7 N/mm² Compr.

CE	Grain size mm	Grouting height mm	Compressive strength N/mm ²				Bending strength N/mm ²			Expansion Vol. %	Consumption kg/m ³
			2 h	1 d	7 d	28 d	2 h	1 d	7 d		
E1*	0 – 0,5	to 20	–	≥ 40	≥ 55	≥ 65	–	≥ 5	≥ 6	+ 0,3	1600
E1SF*	0 – 0,5	to 20	–	≥ 15	≥ 40	≥ 50	–	≥ 4	≥ 6	+ 0,3	1800

INJECTION GROUT

PAGEL-INJECTION GROUT

E1F

E1F*	<0,125	–	–	≥ 30	≥ 45	≥ 60	–	≥ 4	≥ 6	+ 0,5	1500
-------------	--------	---	---	------	------	------	---	-----	-----	-------	------

JOINT FILLER GROUT

PAGEL-JOINT FILLER GROUT

FM10

develops high early and final strengths
water-impermeable
pumpable
frost and deicing-salt resistant
certified to fire protection class A1 as specified by EN 13501 and DIN 4102

for filling the joints between precast reinforced concrete part with and without all types of joint profile and wire rope loop connecting elements
for filling building joints, groves and hollow spaces
for injecting into and filling overhead anchor holes



	Grain size mm	Amount of water %	Compressive strength N/mm ²			Bending strength N/mm ²			Expansion Vol. %	Consumption kg/m ³
			1 d	7 d	28 d	1 d	7 d	28 d		
FM10	0 – 1	14	≥ 20	≥ 50	≥ 65	≥ 4	≥ 6	≥ 8	+ 0,4	1900

PAGEL-GROUT

high flowability for at least 90 minutes
easy to pour
controlled expansion with a rigid bond
low development of warmth
low modulus of elasticity
frost and deicing-salt resistant
certified to fire protection class A1 as specified by EN 13501 and DIN 4102

rigid joint grouting to connect concrete parts with PFEIFER-VS® **BOX system elements**
grouting of tensile-and transverse-force stressed and strained prefabricated joints in connection with PFEIFER VS® **BOX**
grouting of connections with:
PFEIFER **column base system**
PFEIFER **wall shoe system**



	Grain size mm	Grouting height mm	Compressive strength N/mm ²				Bending strength N/mm ²				Expansion Vol. %	Consumption kg/m ³
			1 d	7 d	28 d	90 d	1 d	7 d	28 d	90 d		
VS®	0 – 5	20 – 120	≥ 40	≥ 70	≥ 80	≥ 90	≥ 4	≥ 6	≥ 8	≥ 10	+ 0,5	2000

Approved under the building authority's regulations within the scope of PFEIFER-VS®-Rail Systems:
PFEIFER-VS®-rail systems **TZ100** approval number: Z-21.8-1847
PFEIFER-VS®-rail systems **BZ250** approval number: Z-21.8-1792
PFEIFER-VS®-plus-box approval number: Z-21.8-1839
PFEIFER-VS®-slim-box approval number: Z-21.8-1875

Classified in accordance with DafStb-Rili,					
	Flowability/Expansion class	Shrinkage	Early strength class	Compressive strength class	
VS®	Categorisation a3	SKVB II	A	C60/75	

JOINT FILLER GROUT

PAGEL-JOINT FILLER GROUT

non-shrinking joint filler grout, with a gel-like consistency
pumpable
develops high early and final strengths
water-impermeable
frost and deicing-salt resistant
Certified to fire protection class A1 as specified by EN 13501 and DIN 4102

Joint filler grout used in the building authority approved PFEIFER-VS®-**Rail Systems BZ250 and TZ100**
For filling vertical and horizontal joints between prefabricated reinforced concrete parts
For filling building joints, groves and hollow spaces



	Grain size mm	Grouting height mm	Compressive strength N/mm ²			Bending strength N/mm ²			Expansion Vol. %	Consumption kg/m ³
			1 d	7 d	28 d	1 d	7 d	28 d		
VS®-P	0 – 2	10 – 40	≥ 40	≥ 60	≥ 70	≥ 4	≥ 7	≥ 10	+ 0,3	2000

Approved under the building authority's regulations within the scope of PFEIFER-VS®-Rail Systems:
PFEIFER-VS®-Rail Systems **TZ100** approval number: Z-21.8-1847
PFEIFER-VS®-Rail Systems **BZ250** approval number: Z-21.8-1792

Classified in accordance with DafStb-Rili,					
	Consistency	Shrinkage	Early strength class	Compressive strength class	
VS®-P	Categorisation gel-like	SKVM II	A	C55/67	

PAGEL-PCC-MORTAR

concrete-replacement-system according to ZTV-ING, ZTV-W easy to use suitable for processing on vertical and over-the-head-surfaces single component, sprayable vapor diffusionable reduces the penetration of CO₂ and moisture
MSO2: Corrosion protection and adhesion layer

Wall and ceiling areas and over-head work
 Tunnels
 Bridges
 Facades
 Parapets
 Reprofiling
 ZTV-ING-Application: PCC II
 ZTV-W LB291 listed
 Stress and strain classification according to DAfStb-RiLi-SIB: M2



MSO2
 MS 20®

	Grain size mm	Layer thickness mm	Compressive strength N/mm ²			Bending strength N/mm ²			Consumption kg/m ³
			1 d	7 d	28 d	1 d	7 d	28 d	
MSO2	–	–	–	–	–	–	–	–	1850
MS20®	0 – 2	6 – 40	≥ 20	≥ 45	≥ 55	≥ 4	≥ 6	≥ 8	2000

PCC-I-MORTAR

PAGEL-PCC-I-MORTAR

concrete-replacement-system according to ZTV-ING, ZTV-W easy to use, plastic-strengthened highly suitable for use on horizontal substrates ready to use, single component resistant to frost and dew salt applicable and loadable under dynamic stress
MHO2: Corrosion protection and adhesion layer

Leveling course for bridges, tunnels and car parks (underlinings and coatings)
 Concrete coatings,
 Concrete floor surfaces,
 Leveling of gradients
 Repairs of outbreaks
 ZTV ING application: PCC I
 ZTV W LB291 listed
 Stress and strain classification according to DAfStb-RiLi-SIB: M2



MHO2
 MH20
 MH80

	Grain size mm	Layer thickness mm	Compressive strength N/mm ²			Bending strength N/mm ²			Adhesive strength N/mm ²	Consumption kg/m ³
			1 d	7 d	28 d	1 d	7 d	28 d		
MHO2	–	–	–	–	–	–	–	–	≥ 1,5	1850
MH20	0 – 2	6 – 40	–	≥ 35	≥ 55	–	≥ 6	≥ 8	≥ 2,0	2000
MH80	0 – 8	> 30	–	≥ 35	≥ 55	–	≥ 6	≥ 8	≥ 2,0	2000

Nearly all types of grouts are also available with cements of classes CEM III/A or CEM I HS/NA (free of C₃A),- however, the technical data may vary according to cement type.

MS05

PAGEL-PCC-SCREEDING COMPOUND

screeing compound areas (ZTV-ING; OS-C; OS-DII), very high stability and adhesive, single component, universally applicable, plastic-strengthened and ready for use, sprayable, vapor diffusable, resistant to frost and dew salt

Repair of pores, holes, cracks, floor and wall irregularities; Substrates for surface protection coatings; Equalising of concrete maintenance work; Coating of finished parts, masonry and concrete surfaces; Filling of pipe slits



	Grain size mm	Layer thickness mm	Compressive strength N/mm ²			Bending strength N/mm ²			Adhesive strength N/mm ²	Consumption kg/m ³
			1 d	7 d	28 d	1 d	7 d	28 d		
MS05	0 – 0,5	1,5 – 6	≥ 15	≥ 35	≥ 45	≥ 3	≥ 6	≥ 8	≥ 1,5	2000

SPCC-SPRAY-MORTAR

SP20

PAGEL-SPCC-SPRAY-MORTAR

SP40

SPCC-Spraying areas according to ZTV-ING, ZTV-W suitable for both wet and dry spraying techniques tested with different spraying systems, single component, resistant to frost and dew salt, vapor diffusable, **MS02:** Corrosion protection

Bridges
Tunnels
Concrete containers
Wall- and seiling surfaces
Facades
Struts
Beams
Waterway constructions



	Grain size mm	Layer thickness* mm	Compressive strength N/mm ²			Bending strength N/mm ²			Adhesive strength N/mm ²	Consumption kg/m ³
			1 d	7 d	28 d	1 d	7 d	28 d		
SP20	0 – 2	up to 50/80	≥ 20	≥ 40	≥ 50	≥ 4	≥ 6	≥ 8	≥ 1,5	2000
SP40	0 – 4	up to 100/150	≥ 20	≥ 45	≥ 60	≥ 4	≥ 6	≥ 8	≥ 1,5	2000

* wet spraying method (multiple layers)/dry spraying method (multiple layers)

CONSTRUCTION-MORTAR

M3®

PAGEL-CONSTRUCTION-MORTAR

Concrete-Replacement-System according to PCC (DAfStb-Repair guideline), high carbonating resistance high bond performance hardening under dynamic stress and strain **MS02:** Corrosion protection and adhesion layer

Demand class M3
Struts
Plates
Bars
Wall and floor surfaces



	Grain size mm	Layer thickness mm	Compressive strength N/mm ²			Bending strength N/mm ²			Adhesive strength N/mm ²	Consumption kg/m ³
			1 d	7 d	28 d	1 d	7 d	28 d		
M3®	0 – 2	5 – 40	≥ 20	≥ 45	≥ 55	≥ 4	≥ 6	≥ 8	≥ 1,5	2000

PAGEL-UNIVERSAL-MORTAR

areas of concrete replacement
free of polymers, single component
resistant to frost and dew salt
building material class A1
(not inflammable)
sprayable
fire protection mortar

Wall and floor surface
Industrial floor
Store and ramp areas
Joints



U02

U05

U10

U20

U40

U80

U160

CE	Grain size mm	Layer thickness mm	Compressive strength N/mm ²			Bending strength N/mm ²			Adhesive strength N/mm ²	Consumption kg/m ³
			1 d	7 d	28 d	1 d	7 d	28 d		
U02	0 – 0,2	0,5 – 3	≥ 15	≥ 40	≥ 50	≥ 4	≥ 6	≥ 7	≥ 1,5	1900
U05	0 – 0,5	2 – 6	≥ 15	≥ 35	≥ 50	≥ 3	≥ 5	≥ 7	≥ 1,5	1900
U10	0 – 1	5 – 20	≥ 20	≥ 50	≥ 60	≥ 3	≥ 6	≥ 7	≥ 2	1800
U20	0 – 2	10 – 30	≥ 20	≥ 40	≥ 50	≥ 3	≥ 6	≥ 7	≥ 2	1900
U40	0 – 4	10 – 40	≥ 25	≥ 50	≥ 65	≥ 4	≥ 6	≥ 8	≥ 2	1900
U80	0 – 8	30 – 80	≥ 20	≥ 45	≥ 55	–	–	–	≥ 2	1900
U160	0 – 16	≥ 50	≥ 35	≥ 50	≥ 60	–	–	–	≥ 2	2150

QUICK-REPAIR-MORTAR

PAGEL-QUICK-REPAIR-MORTAR

areas of quick repair
load bearing after 2 hours
(even at 5 °C)
good adhesion
chloride free
easy application

Concrete and mortar surfaces
Self-leveling floors
Stairs
Industrial floors



R20/02

R20/05

R20/10

R20/20

R20/40

R20/80

CE	Grain size mm	Layer thickness mm	Compressive strength N/mm ²				Bending strength N/mm ²			Adhesive strength N/mm ²	Consumption kg/m ³
			2 h	1 d	7 d	28 d	1 d	7 d	28 d		
R20/02	0 – 0,2	0,5 – 5	≥ 5	≥ 15	≥ 30	≥ 50	≥ 3	≥ 6	≥ 8	≥ 2	1900
R20/05	0 – 0,5	2 – 6	≥ 5	≥ 20	≥ 40	≥ 50	≥ 3	≥ 6	≥ 8	≥ 2	1800
R20/10	0 – 1	3 – 20	≥ 5	≥ 20	≥ 40	≥ 55	≥ 3	≥ 6	≥ 8	≥ 2	1900
R20/20	0 – 2	5 – 40	≥ 5	≥ 25	≥ 40	≥ 55	≥ 4	≥ 6	≥ 9	≥ 2	2000
R20/40	0 – 4	20 – 50	≥ 5	≥ 25	≥ 45	≥ 55	≥ 4	≥ 6	≥ 9	≥ 2	2000
R20/80	0 – 8	30 – 100	≥ 5	≥ 25	≥ 40	≥ 55	–	–	–	≥ 2	2000

Nearly all types of grouts are also available with cements of classes CEM III/A or CEM I HS/NA (free of C₃A),- however, the technical data may vary according to cement type.

PAGEL-READY-FOR-USE-MORTAR - DRINKING WATER AREA

areas for drinking water fulfilled „Drinking water recommendation“ (KTW) corresponds to DVGW W270 and W347 resistant to frost and dew salt sprayable water impermeable

Drinking water areas Wall and floor surface of tanks, canals, dams Waterpipes Sewage plants



	DVGW W300 W270 W347	CE	Grain size mm	Layer thickness mm	Compressive strength N/mm ²			Bending strength N/mm ²			Adhesive strength N/mm ²	Consumption kg/m ³
					1 d	7 d	28 d	1 d	7 d	28 d		
TW05			0 – 0,5	2 – 6	≥ 15	≥ 35	≥ 45	≥ 3	≥ 5	≥ 7	≥ 1,5	1700
TW10			0 – 1	5 – 10	≥ 25	≥ 45	≥ 55	≥ 4	≥ 6	≥ 8	≥ 2	1800
TW20			0 – 2	10 – 30	≥ 25	≥ 45	≥ 55	≥ 4	≥ 6	≥ 8	≥ 2	1850
TW40			0 – 4	20 – 40	≥ 25	≥ 45	≥ 60	≥ 4	≥ 6	≥ 8	≥ 2	1850
TW05 (white)			0 – 0,5	2 – 6	≥ 15	≥ 30	≥ 40	≥ 3	≥ 5	≥ 6	≥ 1,5	1700
TW10 (white)			0 – 1	5 – 15	≥ 20	≥ 40	≥ 50	≥ 4	≥ 6	≥ 8	≥ 2	1800
TW20 (white)			0 – 2	10 – 30	≥ 20	≥ 35	≥ 45	≥ 4	≥ 6	≥ 8	≥ 2	1850
TW40 (white)			0 – 4	20 – 60	≥ 25	≥ 35	≥ 45	≥ 4	≥ 6	≥ 8	≥ 2	1900

PAGEL-CHANNEL-MORTAR

KA05

Channel and waste water range
 high resistance against strong
 chemical attack
 resistant to sulfate attack (industry) and
 ammonium attack (agriculture)
 sprayable
 plastic-strengthened
 water impermeable

Channel pipes
 Sewage plants
 Waste water collecting tank



KA20

CE	Grain size mm	Layer thickness mm	Compressive strength N/mm ²			Bending strength N/mm ²			Adhesive strength N/mm ²	Consumption kg/m ³
			1 d	7 d	28 d	1 d	7 d	28 d		
			7 d	7 d	28 d	7 d	7 d	28 d		
KA05	0 – 0,5	2 – 5	≥ 10	≥ 35	≥ 55	≥ 2	≥ 6	≥ 8	≥ 1,5	1900
KA20	0 – 2	6 – 40	≥ 10	≥ 45	≥ 60	≥ 3	≥ 7	≥ 9	≥ 2	2000

REPAIR GROUT

PAGEL-REPAIR GROUT

KA-S

rapid set repair grout
 suitable for all kinds of fast repairs,
 filling and sealing
 easy to use - requires only water
 resilient within a short period of time
 impermeable to water
 workability approx. 30 sec. (20 °C)

sealing rigid cracks
 temporary sealing cracks that leaks
 water
 assembly and installation grout



	Grain size mm	Layer thickness mm	Compressive strength N/mm ²			Bending strength N/mm ²			Application time min (20 °C)	Consumption kg/l
			1 d	7 d	28 d	1 d	7 d	28 d		
			1 d	7 d	28 d	1 d	7 d	28 d		
KA-S	0 – 0,5	≤ 20	≥ 30	≥ 50	≥ 60	–	–	–	app. 0,5	1,75

Nearly all types of grouts are also available with cements of classes CEM III/A or CEM I HS/NA (free of C₃A),- however, the technical data may vary according to cement type.


O2C

PAGEL-PROTECTION PAINT

according to OS-C-/OS-B- and/or OS-4/OS-2
 applicable to moist-damp or dry surfaces
 short waiting periods
 vapor diffusable
 free of solvents
 different RAL-colours

Bridges
 Concrete facades
 Curing agent
 Tunnels
 Dams
 Container



	Applications number	Layer thickness mm	Adhesive-strength N/mm ²	Application temperatur °C	Application time min.	Consumption (1 application) kg/m ²
O2C	2	0,12 – 0,36	≥ 1,3	+8 – +40	unlimited	0,24 – 0,29


O2DE

PAGEL-PROTECTION COATING

according to OS-DII- bzw. OS-5A
 crack bridging (even at -20 °C)
 high elasticity
 vapor diffusable
 free of solvents
 different RAL-colours

Bridges
 Concrete and mortar surfaces
 Tunnels
 Areas of fine cracks



	Applications number	Layer thickness mm	Adhesive-strength N/mm ²	Application temperatur °C	Application time min.	Consumption (1 application) kg/m ²
O2DE	3	0,33 – 2,66	≥ 1,3	+8 – +40	unlimited	0,34 – 0,37


PAGEL-HYDROPHOBATION

O2A

Impregnation according to OS-A-/OS-B and/or OS-1/OS-2
 cream like, solvent-free, alkali-steadily ready for use
 high penetration depth
 prevents surface protection coatings from getting damp underneath
 unique application
 small consumption

Concrete and cement mortar surfaces
 Façades
 Bridges



	Applications number	Layer thickness mm	Adhesive-strength N/mm ²	Application temperatur °C	Application time min.	Consumption kg/m ²
O2A	1	-	-	+5 - +30	unlimited	0,2

CEMENT-SLURRY


PAGELASTIC

D1

according to OS-DI- bzw. OS-5B
 high elasticity
 crack bridging (even at -20 °C)
 vapor diffusable
 two-components
 water impermeable

Bridges
 Concrete and mortar surfaces
 Tunnels
 Areas of fine cracks
 Balconies, terraces, bathrooms
 Below tiles and all water retaining structures



	Applications number	Layer thickness mm	Adhesive-strength N/mm ²	Application temperatur °C	Application time min.	Consumption (1 application) kg/m ²
D1	2	2	≥ 0,8	+8 - +30	app. 120	2,5 - 2,7

P3A


PAGEL-STEEL-FIBRE FLOORING

P3A/15

though elasticity
ready for use
shock and wear resistant
P3A/15: Basalt aggregate, heat proof, shortterm up to 500°C

Rolling and steel plants
Tank workshops
Industrial halls
High temperature areas (**P3A/15**)



 PAGEL SPEZIAL-BETON Wolfsbankring 9 · 46385 Essen EN 13813 Estrichmörtel, Estrichmassen und Estriche CT C80 F10 A9	Grain size mm	Layer thickness mm	Compressive strength N/mm ²			Bending strength N/mm ²			Abrasion cm ³ 50 cm ²	Consumption kg/m ²
			1 d	7 d	28 d	1 d	7 d	28 d		
P3A	0 – 8	20 – 80	≥ 45	≥ 70	≥ 80	–	–	–	3,1	2200
P3A/15	0 – 5	20 – 80	≥ 50	≥ 75	≥ 85	≥ 6	≥ 9	≥ 11	3,0	2500

INDUSTRIAL FLOOR

P40


PAGEL-INDUSTRIAL FLOOR

P80

ready for use industrial floor
certified to fire protection class A1
hard aggregate class A (DIN 1100)
highly wear resistant
easy to apply and cost-effective
specified for stress group: Medium (DIN 18560, 7)

industrial floors
ramps
warehouses, hangars
indoor car parking areas
repair workshops



 PAGEL SPEZIAL-BETON Wolfsbankring 9 · 46385 Essen EN 13813 Estrichmörtel, Estrichmassen und Estriche CT C80 F10 A9	Grain size mm	Layer thickness mm	Compressive strength N/mm ²			Bending strength N/mm ²			Consumption kg/m ³
			1 d	7 d	28 d	1 d	7 d	28 d	
P40	0 – 4	10 – 40	≥ 50	≥ 70	≥ 90	≥ 5	≥ 10	≥ 14	2300
P80	0 – 8	30 – 80	≥ 50	≥ 70	≥ 90	≥ 5	≥ 10	≥ 14	2300

PAGEL-LEVELLING SCREED

FE20

cement-bound self levelling floor based on portland cement, high tightness interior and external area, high flowability can be walked on after 3 hours impervious to water

composite screed for industrial floors and balance layers, screed linings for living and industrial-buildings Garages, parkingplaces and balconies Terraces, cellar soils



CE PAGEL-SPEZIALBETON Wolfsbankring 9 · 45355 Essen EN 13813 Estrichmörtel, Estrichbeton und Estriche CT C50 F7 A15	Grain size mm	Layer thickness mm	Compressive strength N/mm ²			Bending strength N/mm ²			Consumption kg/m ³
			1 d	7 d	28 d	1 d	7 d	28 d	
			FE20	0 – 2,0	5 – 20	≥ 25	≥ 45	≥ 55	

INDUSTRIAL FLOOR / ADHESION LAYER

PAGEL-INDUSTRIAL FLOORS - ADHESION LAYER

PH10

PH10/15

for mineral industrial soil coatings low water cement value serves in addition as corrosion protection
PH10/15: Basalt addition layer

Bonding layer for:
Industrial soil coatings
Industrial floorings
Concrete undergrounds



	Grain size mm	Layer thickness mm	Compressive strength N/mm ²			Bending strength N/mm ²			Abrasion cm ³ 50 cm ²	Consumption kg/m ²	
			1 d	7 d	28 d	1 d	7 d	28 d			
			PH10	0 – 1	–	–	–	–			–
PH10/15	0 – 2	–	–	–	–	–	–	–	–	2,4	2 – 4

EH1

PAGEL-EPOXY - RESIN

EH114

EH115

priming
sealing
solidification
adhesion layer
cover sealing

EH1
low viscosity
high penetration
multi purpose unit

dry surface

EH114
fast setting
reacting from +5 °C

low temperatures

EH115
high bonding on moist
subsoil

moist subsoil



CE	Appli- cation number	Layer thickness mm	Compo- nents	Application temperatur °C	Application time min.	Consump- tion g/m ²
EH1	1	-	2	+10 - +30	app. 45	250 - 500
EH114	1	-	2	+5 - +20	app. 20	250 - 800
EH115	1	-	2	+10 - +30	app. 45	250 - 500

COATING

EH120

EH130

EH136

PAGEL-EPOXY - COATING

solvent-free
high density
self leveling
weather-proof
abrasion resistant
water-friendly

EH120 THIN COATING

Epoxy based
self leveling, high build coating
pigmented, with aggregate

EH130 FINAL COATING

final resin coating
Coating for concrete and screed underground
pigmented, without aggregate

EH136 SURFACE PROTECTION

Evaporation protection for concrete and mortar
surfaces
transparent or pigmented



CE	Appli- cation number	Layer thickness mm	Compo- nents	Application temperatur °C	Application time min.	Consump- tion kg/m ²
EH120	1	1 - 5	2	+10 - +30	app. 40	app. 1,4
EH130	1	-	2	+10 - +30	app. 45	0,35 - 0,8
EH136	1	-	2	+10 - +30	app. 60	0,2 - 0,25

PAGEL-EPOXY - MORTAR/GROUT

easy to use
 abrasion resistant
 water impermeable
 three-components
 (resin/hardener/sand)

EH2 BOXING UP MORTAR
 Struts
 Bridge bearing
 pigmented

EH192 MORTAR
 Industrial hall, storage halls, garages,
 repair places, transparent

EH196R
 Grout
 Rail plate, galvanized steel components and
 non-iron-metals, precisionbearings



EH2
 EH192
 EH196R

CE	Appli- cation number	Layer thickness mm	Compo- nents	Application temperatur °C	Application time min.	Consump- tion kg/l
	EH2	1	3 – 40	3	+10 – +30	app. 20 – 40
EH192	1	3 – 50	3	+10 – +30	app. 20 – 40	app. 2,0

CE	Grain size mm	Compo- nents	Grouting height mm	Compressive strength N/mm ²			Bending strength N/mm ²			Consump- tion kg/m ³
				5 h	12 h	10 d	5 h	12 h	10 d	
EH196R	0,5	2	6 – 50	80	110	140	12	> 23	> 23	1800

INJECTION

PAGEL-INJECTION-RESIN

solvent-free
 low viscously
 high compressive and
 bonding strength
 permanent connection
 sea water and waste
 water impermeable
 high adhesive force
 passive behaviour
 against steel thixotrop

bonds fire cracks, hard, low viscosity
 2-component epoxy-resin



EH145

	Appli- cation number	Layer thickness mm	Compo- nents	Application temperatur °C	Application time min.	Consump- tion kg/l
EH145	1	–	2	+10 – +30	app. 30	1,1

O1

PAGEL-CURING MEMBRANE

protects surfaces against premature water evaporation
provides for slower draining of the concrete, screed and mortar,
forms water vapour-close film
prevents crack formation

Concrete and mortar surfaces
Cement of screeds
Concrete blocks and finished units
dams and heavy structures



	Appli- cation number	Layer thickness mm	Barrier- coefficient %	Application temperatur °C	Application time min.	Consump- tion g/m ²
O1	1	-	85	+5 - +30	-	100-150

QUICK-REPAIR MORTAR

B1

PAGEL-QUICK-REPAIR MORTAR

areas of installation
easy to use
quick setting
load bearing
ready for use
waterproof

Fillings of e.g. anchorages
Repair of water break-throughs
filling of holes
Sealings
Assembly
filler for plugholes



	Grain size mm	Layer thickness mm	Compressive strength N/mm ²				Bending strength N/mm ²			Adhesive strength N/mm ²	Consump- tion kg/dm ³
			1 h	2 h	1 d	7 d	1 d	7 d	28 d		
B1	-	-	≥ 2,5	≥ 5	≥ 30	≥ 40	≥ 4	≥ 6	≥ 8	-	2

CONSTRUCTION AND TILE ADHESIVE

R34

PAGEL-CONSTRUCTION AND TILE ADHESIVE

R34W

high bond strength and good flexibility
multi-purpose use
water- / frost resistant
R34W: white

Wall and floor areas
solid foam
Isolation- and protection covering



	Appli- cation number	Layer thickness mm	Adhesive strength N/mm ²	Application temperatur °C	Application time min.	Consump- tion kg/m ²
R34	1	1 - 3	≥ 1,5	+5 - +30	app. 45	2,0
R34W	1	1 - 3	≥ 1,5	+5 - +30	app. 45	2,0



PAGEL-PRODUCTS WITH CE-MARKING

Products	CE-Conformity	
	EN	Class
GROUT		
V 1/50	1504-6	-
V 1/160	1504-6	-
V 1/10	1504-6	-
V 2/10	1504-6	-
V 2/40	1504-6	-
V 2/80	1504-6	-
V 2/160	1504-6	-
V 14/10	1504-6	-
V 14/40	1504-6	-
V 14/80	1504-6	-
E 1	1504-6	-
E 1 F	1504-6	-
VB 10	1504-6	-
VB 40	1504-6	-
V 1/30HF	1504-6	-
V 1/60HF	1504-6	-

CONCRETE REPAIRING		
MHO2	1504-7	-
MH20	1504-3	R4
MH80	1504-3	R4
MSO2	1504-7	-
MSO5	1504-3	R3
MS20	1504-3	R4
SP20	1504-3	R4
SP40	1504-3	R4
M3	1504-3	R4
UO2	1504-3	R3
UO5	1504-3	R3
U10	1504-3	R4
	13813	CT-C60-F10-A9
U20	13813	CT-C50-F7-A9
U40	1504-3	R4
	13813	CT-C60-F10-A9
U80	1504-3	R4
	13813	CT-C50-F7-A9
U160	1504-3	R4
	13813	CT-C60-F7-A9
R20/O2	1504-3	R3
R20/O5	1504-3	R3
R20/10	1504-3	R4
	13813	CT-C60-F10-A12
R20/20	1504-3	R4
	13813	CT-C60-F10-A12
R20/40	1504-3	R4
	13813	CT-C60-F10-A9
R20/80	1504-3	R4
	13813	CT-C60-F7-A9
R20/160	13813	CT-C60-F7-A9
TW05	1504-3	R3
TW10	1504-3	R4
	13813	CT-C60-F10-A9
TW20	1504-3	R4
	13813	CT-C50-F7-A9
TW40	1504-3	R4
	13813	CT-C60-F10-A9
KA05	1504-3	R3
KA20	1504-3	R4

Products	CE-Conformity	
	EN	Class
CONCRETE PROTECTION		
O2A	1504-2	Hydrophobation
O2C	1504-2	Coating
O2DE	1504-2	Coating
D1	1504-2	Coating

INDUSTRIAL FLOOR		
P3A	13813	CT-C80-F10-A9
FE20	13813	CT-C50-F7-A15
P40	13813	CT-C80-F10-A9
P80	13813	CT-C80-F10-A9

CONSTRUCTION PRODUCTS		
R34	12004	C1 TE

RESINS		
EH1	13813	SR-AR1-B1,5-IR4
EH114	13813	SR-B1,5
EH115	13813	SR-AR1-B1,5-IR4
EH120	13813	SR-AR1-B1,5-IR4
EH130	13813	SR-AR1-B1,5-IR4
EH136	13813	SR-AR1-B1,5-IR4
EH192	13813	SR-AR1-B1,5-IR4
EH2	13813	SR-AR1-B1,5-IR4
EH196R	13813	SR-AR1-B1,5-IR4

- DIN EN 1504 = Products and systems for protection and repair of concrete supporting structures
- DIN EN 1504-3:2005 = Mortar for statically and non-statically relevant repairs
- DIN EN 1504-6:2006 = Product for the anchoring of reinforced bars
- DIN EN 13813 = Properties and requirements on screed (cement-based and epoxy-coatings)
- DIN EN 12004 = Mortars and adhesives for tiles and plates: definitions and specifications
- DIN V 18026 = Surface protection / coating product for concrete from products according DIN EN 1504-2:2005-1


PAGEL CONCRETE REPAIR SYSTEMS

ZTV-ING PART 3, chapter 4 (SIB) / DAfStb - guideline - SIB / DIN V 18026 / EN 1504 Part 2 and 3

PCC/SPCC-MORTAR-SYSTEMS

Appli- cation	System application and product name		Test- certificate no.	Agreement- certifikat no.	Expiry- date	
PCC I	MH02	CORROSION PROTECTION AND ADHESION LAYER	MKB MHB	P-BAM 7.1/25202/8-2	01/2188-1-50-V2	31.03.16
	MH20	PCC-I-MORTAR	WM			
	MH02	CORROSION PROTECTION AND ADHESION LAYER	MKB MHB	P 2141 / 01-110	01/2141/01-110-93-V2	17.09.15
	MH80	PCC-I-MORTAR	WM			
PCC I/II	MS02	CORROSION PROTECTION AND ADHESION LAYER	MKB MHB	P-BAM VII. 1/25203/6-2	00/2188 - 45 - V2	28.08.13
	MS20	PCC-MORTAR	WM			
	MS05	PCC-SCREEDING COMPOUND	FS			
	MS02	CORROSION PROTECTION AND ADHESION LAYER	MKB MHB	P 2334 / 02-159	03/2334/02159-145-V1	18.12.12
SPCC		<u>WET- and DRY-spraying</u>				
	MS02	CORROSION PROTECTION AND ADHESION LAYER	MKB MHB	P 2255/00-91	00/2255/00-91-67-V2	03.09.15
	SP20	SPCC-MORTAR	WM			
		<u>DRY-spraying</u>				
	MS02	CORROSION PROTECTION AND ADHESION LAYER	MKB MHB	P 2551/01-130	01/2551/01-130-122-V2	09.12.16
	SP40	SPCC-MORTAR	WM			

CONCRETE PROTECTION - SYSTEM

Appli- cation-	System application and product name		specifications for comple- tion according DIN V 18026	EG-Declaration of Conformity 
OS-1	O2A	HYDROPHOBATION	H fulfilled	fulfilled
OS-2	O2A	HYDROPHOBATION	H fulfilled	fulfilled
	O2C	PROTECTION PAINT	OS fulfilled	fulfilled
OS-4	MS05	PCC-SCREEDING COMPOUND	FS fulfilled	fulfilled
	O2C	PROTECTION PAINT	OS fulfilled	fulfilled
OS-4	MS05	PCC-SCREEDING COMPOUND	FS fulfilled	fulfilled
	O2DE	PROTECTION COATING	OS fulfilled	fulfilled
OS-5b	D1	PAGELASTIC	OS fulfilled	fulfilled

Your first step to PAGEL®

www.pagel.com



Here you can inform yourself online and up-to-date technical information and news concerning PAGEL®.

Also you can find technical data sheets, test certificates, permissions, invitations of tenders and safety data sheets of our products which are downloadable in digital form.

In addition you find your next PAGEL® store as well as the agent responsible for you.

For general questions or for support regarding concrete projects please do not hesitate to contact us or one of our field representatives.



INTERNATIONALES ADRESSES

AUSTRIA

Huber Alex & Partner KEG
Flötzersteig 167/2
A-1140 WIEN
Fon.: +43 1 7073447
Fax: +43 1 7073559
eMail: haup@aon.at
Internet: www.pagel.com

BELGIUM

REWAH N.V.
Nijverheidsweg 24
B-2240 ZANDHOVEN
Fon.: +32 3 4751414
Fax: +32 3 4751094
eMail: info@rewah.com
Internet: www.rewah.com

BULGARIA

BORIS BORISSOV – TERRA
Kableškov 1 et. 3
BG-5500 LOVECH
Fon.: +420 608 219280
Fon.: +359 879 422448
eMail: terra3d@abv.bg
Internet: www.terrabulgarien.com

CHINA

c/o TAIWAN POLIMAX CO., LTD.
11F, 257 Wen Tsz Road
Tzuo Ying District
KAOHSIUNG CITY, TAIWAN ROC
Fon.: +886 7 3438910
Fax: +886 7 3430476
Mobil: +886 933 324207
eMail: bat10001@ms32.hinet.net
lanford@xhome.com.tw

CROATIA

PSB SPECIJALNI BETON d.o.o.
Adamićeva 3
10020 ZAGREB
Mobil: +385 91 3023902
Tel: +385 1 5590411
Fax: +385 1 5590411
eMail: pagel.info@gmail.com

DENMARK

MB Projekt ApS
Mølledamsvej 12
DK-3460 BIRKERØD
Fon.: +45 45820318
Fax: +45 45820518
eMail: info@mbprojekt.dk
Internet: www.mbprojekt.dk

EGYPT

MISR Engineering
for Construction Chemicals
60, Aalam City, Agouza
ET-CAIRO
Fon.: +20 2 3475217
+20 2 3440767
Fax: +20 2 3444711

ESTONIA

Baby Holding OY
Peeter Erg
Ülase 8-10
EST-75501 SAKU HARJUMAA
Fon.: +372 53 583696
eMail: info@betoniplast.eu
Internet: www.betoniplast.eu

FINLAND

ALIMEX OY
Huvilakatu 12
FIN-04400 JÄRVENPÄÄ
Fon.: +358 9 2922350
Fax: +358 9 2916006
Mobil: +358 40 5000987
eMail: myynti@alimex.fi

FRANCE

PAGEL SAS
Espace Cristal
22, rue Gustave Eiffel, BP10058
F-78306 POISSY CEDEX
Fon.: +33 1 39223900
Fax: +33 1 39224039
Mobil: +33 6 12821911
eMail: info@pagel.fr
Internet: www.pagel.fr

GERMANY

PAGEL SPEZIAL-BETON GmbH & Co. KG
Wolfsbankring 9
D-45355 ESSEN
Fon.: +49 201 68504-0
Fax: +49 201 68504-31
eMail: info@pagel.com
Internet: www.pagel.com

HUNGARY

EXTRACEM Kft.
Damjanich u. 26
H-2832 HÉREG
Fon.: +36 34 372671
Fax: +36 34 372671

INDIA

PAGEL Concrete Technologies Private Limited
Pidilite Industries Limited
Ramrashtra Mandir Road,
Post Box No.17411, Andheri (East)
IND-Mumbai 400059
Fon.: +91 22 2835 7486
Fax: +91 22 2835 7008
Mobil: +91 983 3482770
eMail: manoj.kumar@pidilite.com
Internet: www.pidilite.com

IRAN

PAGEL IRAN ARSHIA ORANG CO.
No.20, 5th St., North Falamak Ave.
Shahrak Gharb
IR-ZIP 1467885484-TEHRAN
Fon.: +98 21 88370130
Fax: +98 21 88075715
eMail: info@arshiaorang.com
Internet: www.arshiaorang.com

ISRAEL

SEALTEC CONSTRUCTION CO. LTD
1 Bareket St.
IL-37807 BEIT HANANYA
Fon.: +04 6100333
Fax: +04 6101510
Mobil: +050 5210364
eMail: sealtec@netvision.net.il
Internet: www.sealtec.co.il

ITALIA

PAGEL ITALIA Martin Leverberg
Innenwall 11, D-47495-Rheinberg
Fon.: (DE) +49 2843 4465930
Fon.: (DE) +49 2843 4456920
eMail: m.leverberg@pagel.it
Internet: www.pagel.it
Via Fontana 11, I-20122-MILANO
Fon.: (IT) +39 02 39432703
eMail: info@pagel.it
Internet: www.pagel.it

JAPAN

PAGEL NIPPON CO. LTD.
Matsushit Bldg. 3 F
2-12-13 Shinkawa, Chuo-Ku
J-100 TOKYO
Fon.: +81 3 35535264
Fax: +81 3 35535984
eMail: pagel-nippon@mwe.biglobe.ne.jp
Internet: www.b-info.jp/pagel-nippon/

KOREA (REPUBLIC)

IZIN CORPORATION CO.
501 SEUNGHWA BLDG,
1223-1,GAEPO-DONG, KANGNAM-GU,
ROK-SEOUL
Fon.: +82 2 5734893
Fax: +82 2 5734894
Mobil: +82 11 3893364
eMail: izin0325@naver.com

LATVIA

SIA "OK BUVMATERIALI"
Piedrujas iela 3d
LV-1073 RIGA
Fon.: +371 673 65636
Fax: +371 673 65626
+371 286 30374
eMail: okbuv@okbuv.lv
Internet: www.okbuv.lv

LITHUANIA

MOSAS Ltd.
Birželio 23-iosios str. 5
LT-03206 VILNIUS
Fon.: +370 5 2610179
Fax: +370 5 2608355
Internet: www.mosas.lt

INTERNATIONALES ADRESSES



NORWAY

PAGEL INDUSTRIMØRTEL A/S
Postboks 135
N-1751 HALDEN
Fon.: +47 69 192514
Fax: +47 69 191840
Mobil: +47 95 107110
eMail: larssen@pagel.no



PORTUGAL

BIU INTERNACIONAL
Consultoria e Comércio, Lda.
Rua Gil Vicente, N° 4
P-2615 ALVERCA
Fon.: +351 21 9578888
Fax: +351 21 9578890
eMail: info@biu.pt
Internet: www.biu.pt



ROMANIA

PAGEL ROMANIA S.R.L.
Str. G-ral. Candiano Popescu Nr. 63A
Ap.1 Sector 4
RO-040581 BUCUREȘTI
Fon.: +40 21 3206859
Fax: +40 21 3224254
eMail: office@pagel.ro
Internet: www.pagel.ro



SPAIN

YA YA MATERIALES, S.L.U.
Camino de La Era, 16
E-38750 EL PASO
Fon.: +34 922 485450
Fax: +34 922 486206
eMail: info@yaya.es
Internet: www.yaya.es



SWITZERLAND

Rolloplan AG/SA
Feldmattstrasse 23
Postfach 323
CH-6032 EMMEN
Fon.: +41 41 2602074
Fax: +41 41 2602075
Mobil: +41 79 3532074



UKRAINE

KNP
ul. Naukova, 7-A/303
UA-LWOW, 79060
Fon.: +38 322 244685
Fax: +38 322 244683
eMail: knp-mr@mail.lviv.ua



PAKISTAN

PAGEL PAKISTAN Pvt. Ltd.
Zikria Iron Market 26-30
Samundri Road
PK-FAISALABAD
Fon.: +92 41 8533851
Fax: +92 41 8533851
Mobil: +92 345 8443344
eMail: info@pagel-pk.com
Internet: www.pagel-pk.com



QATAR

CIKO Middle East
"C" Ring Road
Q-DOHA
Fon.: +974 44114787
Fax: +974 44114792
eMail: enquires@cikome.com
Internet: www.cikome.com



RUSSIA

ZAO"ASOKA"
Frunskaja nab. 30, bld. 28
RUS-119146 MOSKAU
Fon.: +7 495 7816070
Fax: +7 495 7816070
eMail: pagel@asoka.ru
Internet: www.asoka.ru



SRI LANKA

CONCRETE CHEMICAL PRODUCTS
Ralf Karpinski - General Manager
73, Pepiliyana Road
LK-NUGEGODA
Fon.: 0094 114303218
0094 112812916
Cell: 0094 777714411
Fax: 0094 114304890
eMail: concreteralf@eureka.lk



TAIWAN

TAIWAN POLIMAX CO., LTD.
11F, No. 257
Wen Tsz Rd., Tzuou Ying District,
ROC-KAOHSIUNG CITY, TAIWAN
Fon.: +886 734 38910
Fax: +886 734 30476
Mobil: +886 933 324207
eMail: bat1001@ms32.hinet.net



UNITED KINGDOM

PES (UK) LIMITED
Unit 1, Watling Close
Sketchley Meadows Business Park
**GB-HINCKLEY, LEICESTERSHIRE,
LE10 3EZ**
Fon.: +44 1455 251251
Fax: +44 1455 251252
eMail: sales@pesukltd.com
Internet: www.pesukltd.com



POLAND

PAGEL POLSKA
ul. Lipowa 7, Komorniki
**PL-55-300 RODA LAŠKA
w. dolnośląskie**
Fon.: +48 71 3172806
Fax: +48 71 3176136
Mobil: +48 601 701877
eMail: info@pagel.pl
Internet: www.pagel.pl



CZECH REPUBLIC

HIC & SERVICES S.R.O.
Teplárenská 611/1
CZ-10800 PRAHA 10
Fon.: +420 2 72702112
Fax: +420 2 72702123
eMail: hic@hic.cz
Internet: www.hic.cz



SLOVAKIA

ALLMEDIA s.r.o.
Pod gaštanmi 4
SK-821 07 BRATISLAVA
Fon.: +421 2 62310920
Fax: +421 2 62413041
eMail: allmedia@allmedia.sk
Internet: www.allmedia.sk



SWEDEN

PAGEL SPECIALBRUK
Postadress EURO SPECIALBRUK
Fredsgatan 18
S-43243 VARBERG
Fon.: +46 340 675258
Fax: +46 340 675257
Mobil: +46 705 738743
eMail: johansson@pagel.se
Internet: www.pagel.se



THE NETHERLANDS

VERWAARD HANDELSONDERNEMING B.V.
Postbus 478
NL-2740 AL Waddinxveen
Fon.: +31 88 5401100
Fax: +31 88 5401199
Mobil: +31 6 20091680
eMail: info@verwaard-bv.nl
Internet: www.verwaard-bv.nl



USA

PAGEL-USA Inc.
4282 Shoreline Drive
**USA-SPRING PARK,
MINNESOTA 55384**
Fon.: +1 952 9426105
Fax: +1 952 9426108
eMail: sales@pagel-usa.com
Internet: www.pagel-usa.com



PAGEL®

SPEZIAL-BETON GMBH & CO.KG

WOLFSBANKRING 9 · 45355 ESSEN · GERMANY
TEL. +49 201 68504-0 · FAX +49 201 68504-31
INTERNET WWW.PAGEL.COM · E-MAIL INFO@PAGEL.COM



The information provided in this leaflet, is supplied by our consulting service and is the end result of exhaustive research work and extensive experience.

They are, however, without liability on our part, in particular with regard to third parties proprietary rights, and do not relieve the user of the responsibility for verifying that the products and processes are suitable for the intended application.

The data presented was derived from tests under normal climate conditions according to DIN 50014 and mean average values and analysis.

Deviations are possible when delivery takes place.

Given that recommendations may differ from those shown in this leaflet written confirmation should be sought. It is the responsibility of the purchaser to ensure they have the latest leaflet issue and that its contents are current.

Our customer service staff will be glad to provide assistance at any time.

We appreciate the interest you have shown in our products.

This technical data sheet supercedes previously issued information.

Please find the latest leaflet issues at www.pagel.com.